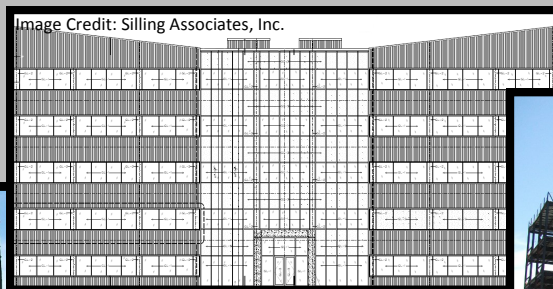


# Office Building

Sayre, PA



Seth M. Moyer | Structural

## General Information

<b>Function:</b>	Business/Office Space
<b>Size:</b>	85,075 SF
<b>Height:</b>	Top of Parapet Elevation = 74'-5"
<b>Dates of Construction:</b>	March 2012 - April 2013
<b>Construction Cost:</b>	\$11 Million
<b>Delivery Method:</b>	Design-Bid-Build

## Architecture

- East and west wings are enclosed with Kingspan insulated metal panels
- Central connecting portion is enclosed with a Kawneer curtain wall glazing system
- 6' high horizontal glazing strips break up the façade at each story
- Comprised of office and meeting space
- Features a fitness wing and locker rooms on the 2nd floor

## Electrical/Lighting

- 2000 A, 480 V, 3-phase, NEMA 3R fused main disconnect
- 480/277 V main distribution panel (3-phase, 4-wire)
- 2000 A automatic transfer switch for emergency generator backup
- 112.5 kVA transformers step 480 V down to 208Y/120 V to feed the power panels
- Lights are typically fluorescent and operate at 277 V

## Project Team

<b>Owner:</b>	Withheld
<b>General Contractor:</b>	High Construction Company
<b>Architect of Record:</b>	Silling Associates, Inc.
<b>Architectural Partnership:</b>	Elliott + Associates Architects
<b>Structural Engineer:</b>	Larson Design Group
<b>MEP Engineer:</b>	Larson Design Group
<b>Civil Engineer:</b>	Larson Design Group

## Structure

- Foundation:**
  - Spread, combined and strip footings support concrete piers, pier walls, foundation walls and columns directly
- Gravity:**
  - Floor system is 4" thick composite deck slabs on open web steel joists. Loads are transferred to wide flange steel beams and columns.
- Lateral:**
  - 16 "K" braced frames extend up to the roof (8 in each the N-S and E-W directions)

## Mechanical

- Ten 10-ton condensing units on the roof
- Two 7000 CFM ERVs sit on the rooftop
- Between 31 and 39 AHUs serve each floor and range from 120 - 635 CFM
- Two 25 kW electric duct heaters
- Six 20 gallon and two 120 gallon electric water heaters